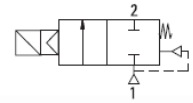


GENERAL FEATURES

- TORK series S8810 (N.C) diaphragm solenoid valves are 2/2 way and pilot operated
- Suitable for non-aggressive liquids (water, light oil etc...)
gaseous fluids (air, oxygen gas and hydrogen gas etc...)
- Minimum operating pressure differential 0,5 bar
- Wide pressure ratings, range of flow rate and orifice options
- TORK solenoid valves satisfy relevant 97/23/EC, Pressure Equipment Directive (PED) and 2006/95/ECC Low Voltage Directive (LVD)
- Solenoid valves must be used with filtered fluids.
- Solenoids valve can be mounted in any position without affecting operation; vertical with coil upwards preferred
- **Standard pipe connection is G (BSP) (ISO 228-1) and on request; other pipe connections are available (NPT (ANSI 1.20.3))**

Normally Closed



ELECTRICAL CHARACTERISTICS

- **Continuous Duty:** ED %100
- **Coil Insulation Class:** H (180°C)
- **Coil Impregnation:** Polyester Fiber Class
- **Coil Encapsulation Material:** Fiber Glass Reinforced
- **Ambient Temperature:** from -10°C, +60°C
- **Protection Degree:** IP65 (ISO 60529) on request; IP68
- **Electric Plug Connection:** DIN 46340 3-poles connector (DIN 43650)
- **Connector Specification:** ISO 4400 / EN 175301-803 Form A, Spade Plug (Cable Ø6-8 mm)
- **Electrical Safety:** IEC 335
- **Standard Voltages:** For AC 12V, 24V, 48V, 110V, 230V
DC 12V, 24V, 48V, 110V

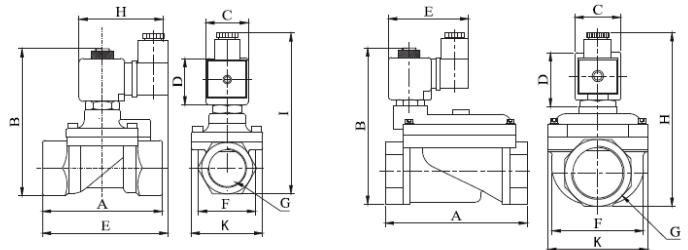
Other voltages on request;

- **Voltage Tolerances:** For AC -15%, +10%
For DC -5%, +10%
- **Frequency:** 50 Hz, other frequencies on request; (60 Hz...)
Other request; connector with LED
Specify coil voltage with order



MATERIALS ON CONTACT WITH FLUID

- **Body:** Brass
- **Internal Parts:** Stainless Steel and Brass
- **Sealing:** EPDM
- **Shading Ring:** Copper
- **Core, Tube, Spring:** Stainless Steel



TECHNICAL FEATURES

- **Max Viscosity:** 5°E (~37cST or mm²/s)
- **Response Time:** Opening Time: 400 ms to ~1600 ms
Closing Time: 1000 ms to ~2000 ms

Dimensions (mm)

	G	A	B	C	D	E	F	K	H	I
3/8"	75	97	32	45	91.3	37.5	52	76	108	
1/2"	79	100	32	45	92	39.5	52	76	110	
3/4"	79	107.5	32	45	94	41.5	52	76	118	
1"	85	115	32	45	101	42.5	52	76	124	

Dimensions (mm)

	G	A	B	C	D	E	F	K	H
11/4"	141	143	32	45	76	96.5	110.7	156	
11/2"	139	143	32	45	76	96.5	110.7	156	
2"	145.6	153	32	45	76	96.5	110.7	165.5	

Valve Type /Order no	Connection Size	Orifice Size	Pressure min/max		Kv	Fluid Temperature min/max		Seal	Weight
S8810	G	mm	bar	bar	lt/min	°C			kg
S8810.02	3/8"	12,5	0,5	16	48	-10	+140	EPDM	0,68
S8810.03	1/2"	14,5	0,5	16	70	-10	+140	EPDM	0,71
S8810.04	3/4"	17	0,5	16	85	-10	+140	EPDM	0,8
S8810.05	1"	17	0,5	16	90	-10	+140	EPDM	0,97
S8810.06	11/4"	46	0,5	12	390	-10	+140	EPDM	2,65
S8810.07	11/2"	46	0,5	12	460	-10	+140	EPDM	2,55
S8810.08	2"	46	0,5	12	580	-10	+140	EPDM	2,98